

# TX301 Series Transfer Switch

1200 — 1600 Amps

Service Entrance Rated · Contactor Type · Open and Delayed Transition

- Automatic Transfer Switch
- 1200 – 1600A Up to 480V VAC, 60 Hz, 100% Current Rated
- Single or Three Phase
- 3 or 4 Poles
- NEMA 1 or 3R
- Open with Inphase or Open with Delayed Transition
- ETL Listed to UL 1008
- High Withstand and Closing Ratings



Image used for illustration purposes only

## Codes and Standards

**Not all codes and standards apply to all configurations. Contact factory for details.**



ETLus Listed



NFPA 70, 99, 110



NEC 700, 701, 702, 708

## Description

Generac's contactor type transfer switches are double-throw robust switch construction with inherent interlocks for safe positive transfer between power sources. The contacts are silver composite for long life, resisting pitting or burning. The switches are rated for full load transfers in mission critical, emergency, legally required, and optional power systems.

The microprocessor based controller provides the customers with the flexibility to program a comprehensive group of set points to match the application needs. The controller has two programmable inputs and one programmable output as standard and is available with an optional expansion board for up to four programmable inputs and outputs. The LCD displays real time and historical information with time-stamped events. The integrated plant exerciser can be configured in off, daily, day of week, biweekly, and monthly intervals with user selectable run time. Standard features of the controller include three phase sensing on both sources, phase unbalance, phase reversal, load shed, emergency inhibit, and communications.

# TX301 Series Transfer Switch

1200 — 1600 Amps

Service Entrance Rated · Contactor Type · Open and Delayed Transition

## STANDARD FEATURES

### GENERAL

- Floor Mounted, Wall Secured
- Cable Entry is Top or Bottom
- Double-Throw, Stored Energy Transfer Mechanism
- Graphical LCD-Based Display for Programming, System Diagnostics and Help Menu Display Mimic
- Diagram with Source Available and Connected
- Method of Transfer: Open with Inphase Transition and Delayed Transition
- Mechanically Interlocked to Prevent Connection of Both Sources
- Modbus® RTU
- TXC 100 Controller
- Operating Temperature -4 ° to 158 °F (-20 ° to 70 °C)
- Voltage Agnostic\*
- High Withstand and Closing Ratings
- Heater Kit Standard on All 3R Enclosures
- Auxiliary Input Includes: Permissive Inputs (24VDC)
- General Alarm Indication
- 2 Year Limited Warranty

### VOLTAGE AND FREQUENCY SENSING

- Three Phase Under and Over Voltage Sensing on Normal and Emergency Sources
- Under and Over Frequency Sensing on Normal and Emergency
- Selectable Settings: Single or Three Phase Voltage
- Sensing on Normal and Emergency 60 Hz
- Phase Sequence Sensing for Phase Sensitive Loads

### START CIRCUIT

- 2-wire Start
- 3-wire Start from C Contact for Circuit Monitoring

### DIGITAL OUTPUTS

- Switch Position Indication (2 Form C)
- Signal Before Transfer (Elevator)
- General Alarm
- Programmable Output

### DIGITAL INPUTS

- Emergency Inhibit (Permissive & Load Shed)
- Go to Emergency
- Manual Generator Retransfer

### CONTROLS

- Front Programmable Control Reduces PPE Needs and Arc Flash Hazard
- Built in Battery Backup – Increases Switch Reliability and Reduces Switch Transition Time to Alternate Source
- Battery Backup Able to Power the Controller for up to 60 Minutes in the Event of No Source Availability
- External 12/24V Control Power Input Option
- Accessible USB Port for Easy Data Downloads, Firmware Updates without Requiring PPE, Reducing the Risk of Arc Flash
- Heater Programmable through Control for Desired Temperature and Humidity Settings
- Front Accessible Customer Connections
- Time-Stamped Event History Log
- Programmable Exerciser – Daily, Weekly, Biweekly, Monthly

\* 480 V 3-Wire Systems and all 600 V systems must be specified at time of ordering for Transformer Kit to be included

## AVAILABLE OPTIONS

- Time Delay in Neutral Transition (TDN) or Inphase with a Default to Time Delay in Neutral Transfer
- Remote Annunciator
- Chicago Code Kit
- 3R Padlockable Cover for Circuit Breaker (Standard on 3R Enclosure)
- CTs for Integrated Metering
- Heater Option for Temperature and Humidity Control (Standard on 3R Enclosure)
- Expandable Input/Output Board Module Includes: 4 Relay Outputs and 4 Optically Isolated Inputs
- Transient Voltage Surge Suppressor (TVSS)
- 2 Year Extended Limited Warranty
- 5 Year Basic Limited Warranty
- 5 Year Extended Limited Warranty
- 7 Year Extended Limited Warranty
- 10 Year Extended Limited Warranty

### ENGINEERED OPTIONS

- Manual Generator Retransfer Switch
- Go to Emergency Switch

### CONVERSION KITS

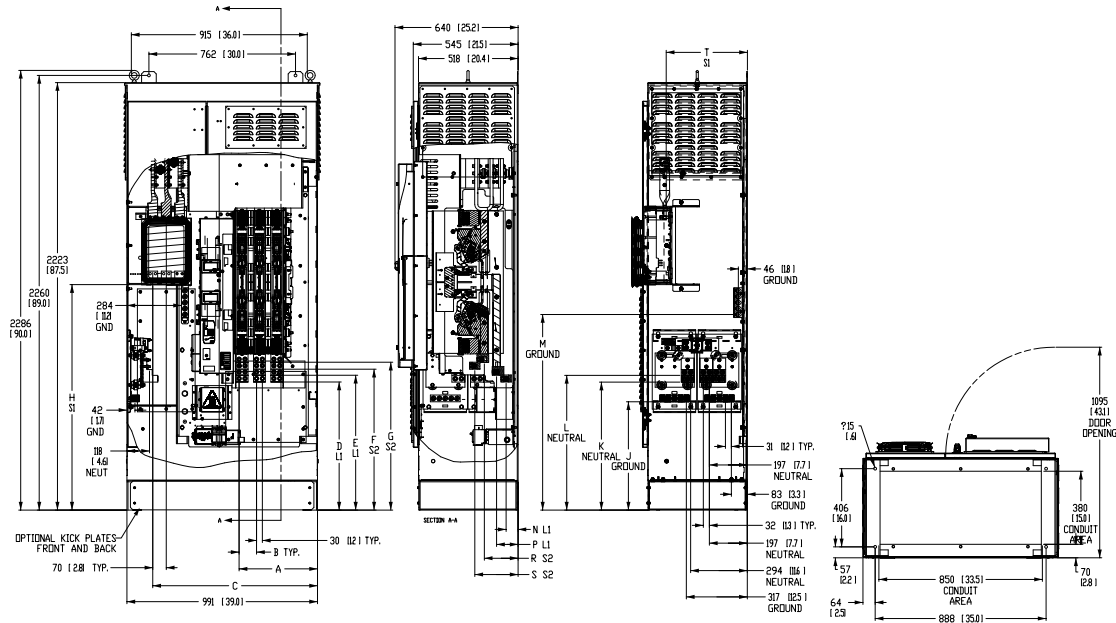
- 480 V Transformer Kit for 3-Wire Systems

# TX301 Series Transfer Switch

1200 — 1600 Amps

Service Entrance Rated · Contactor Type · Open and Delayed Transition

## UNIT DIMENSIONS\*



Service Entrance Rated, Contactor Type, Open and Delayed Transition, 1200A, Type 1 or 3R		
Description		1200A 3 Pole
in (mm)	A (Dim)	16 (407)
	B (Dim)	3.6 (91)
	C (Dim)	33.7 (856)
	D (Dim)	26.2 (666)
	E (Dim)	27.6 (701)
	F (Dim)	28.9 (733)
	G (Dim)	30.3 (768)
	H (Dim)	46.1 (1172)
	J (Dim)	22.2 (563)
	K (Dim)	26.2 (665)
	L (Dim)	27.6 (700)
	M (Dim)	40 (1017)
	N (Dim)	2.4 (62)
	P (Dim)	4.4 (111)
R (Dim)	6.9 (175)	
S (Dim)	8.9 (225)	
T (Dim)	16.6 (421)	
Cu/Al	Normal 75 °C Wire	(4) 4/0-500MCM or (3) 500-750MCM
	Standby Source 75 °C Wire	(4) 750 – 4/0
	Load 75 °C Wire	(4) 750 – 4/0
	Neutral Connection	(12) 750 – 1/0
	Ground Connection	(15) 600-#4 or (30) 250-1/0
lbs (kg)	Weight	880 (399.1)

UL 1008 Withstand and Closing Ratings		
Ampere Rating (A)	WCR Ratings (kA)	Voltage (V)
1200	100	480
1600	100	480

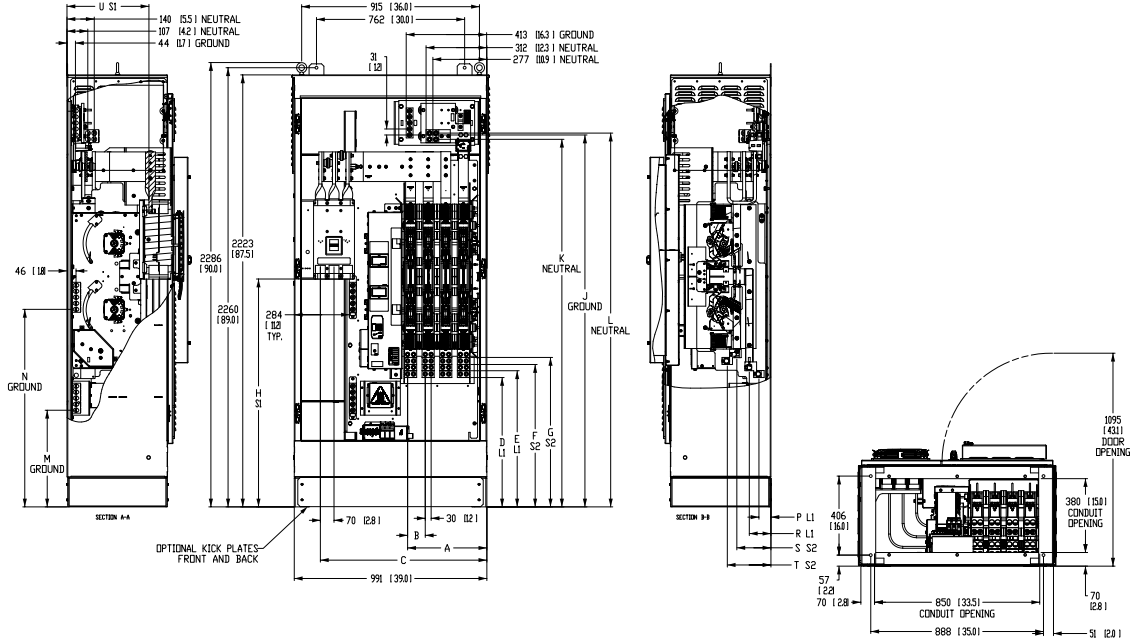
\* All measurements are approximate and for estimation purposes only. Specification characteristics may change without notice. Please contact a Generac Power Systems Industrial Dealer for detailed installation drawings.

# TX301 Series Transfer Switch

1200 — 1600 Amps

Service Entrance Rated · Contactor Type · Open and Delayed Transition

## UNIT DIMENSIONS\*



Service Entrance Rated, Contactor Type, Open and Delayed Transition, 1200A, Type 1 or 3R		
Description		1200A 4 Pole
in (mm)	A (Dim)	16 (407)
	B (Dim)	3.6 (91)
	C (Dim)	33.7 (856)
	D (Dim)	26.2 (666)
	E (Dim)	27.6 (701)
	F (Dim)	28.9 (733)
	G (Dim)	30.3 (768)
	H (Dim)	46.1 (1172)
	J (Dim)	75.3 (1914)
	K (Dim)	74.5 (1891)
	L (Dim)	75.7 (1923)
	M (Dim)	19.6 (498)
	N (Dim)	40 (1017)
	P (Dim)	2.4 (62)
	R (Dim)	4.4 (111)
	S (Dim)	6.9 (175)
	T (Dim)	8.9 (225)
U (Dim)	16.6 (421)	
Cu/Al	Normal 75 °C Wire	(4) 4/0-500MCM or (3) 500-750MCM
	Standby Source 75 °C Wire	(4) 750 – 4/0
	Load 75 °C Wire	(4) 750 – 4/0
	Neutral Connection	(4) 750 – 1/0
	Ground Connection	(15) 600-#4 or (30) 250-1/0
lbs (kg)	Weight	980 (445)

UL 1008 Withstand and Closing Ratings		
Ampere Rating (A)	WCR Ratings (kA)	Voltage (V)
1200	100	480
1600	100	480

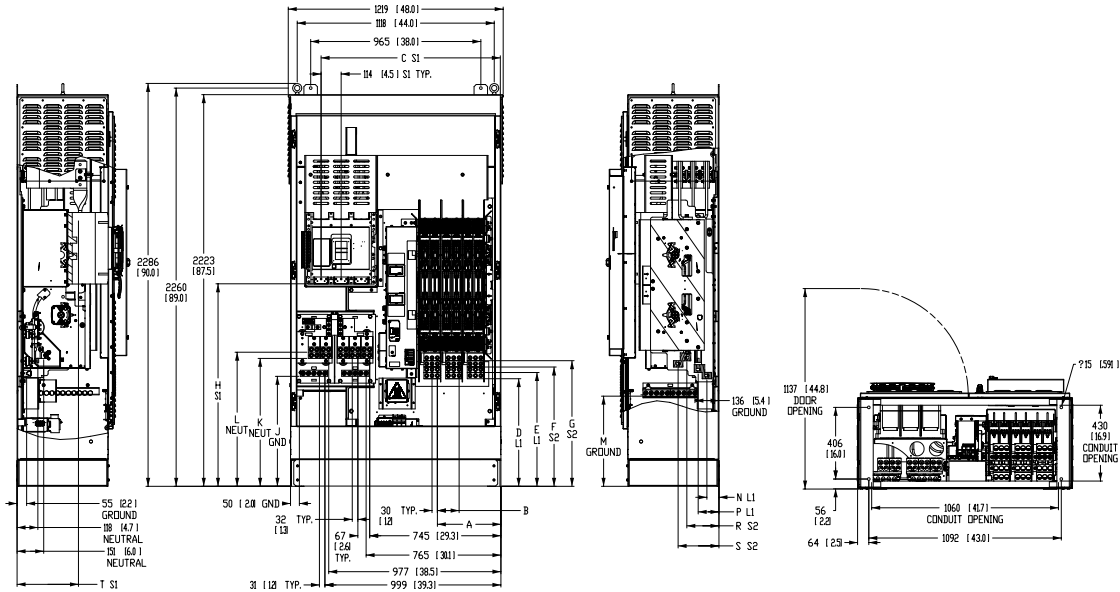
\* All measurements are approximate and for estimation purposes only. Specification characteristics may change without notice. Please contact a Generac Power Systems Industrial Dealer for detailed installation drawings.

# TX301 Series Transfer Switch

1200 — 1600 Amps

Service Entrance Rated · Contactor Type · Open and Delayed Transition

## UNIT DIMENSIONS\*



Service Entrance Rated, Contactor Type, Open and Delayed Transition, 1600A, Type 1 or 3R		
Description		1600A 3 Pole
in (mm)	A (Dim)	14.2 (360)
	B (Dim)	4.8 (123)
	C (Dim)	40.2 (1021)
	D (Dim)	24.1 (611)
	E (Dim)	25.4 (646)
	F (Dim)	26.7 (677)
	G (Dim)	28.1 (713)
	H (Dim)	45.2 (1149)
	J (Dim)	24.6 (624)
	K (Dim)	28.6 (726)
	L (Dim)	30 (761)
	M (Dim)	20.2 (512)
	N (Dim)	2.7 (68)
	P (Dim)	4.6 (118)
R (Dim)	7.2 (182)	
S (Dim)	9.1 (231)	
T (Dim)	13.7 (348)	
Cu/Al	Normal 75 °C Wire	(4) 500 – 1000
	Standby Source 75 °C Wire	(6) 750 – 4/0
	Load 75 °C Wire	(6) 750 – 4/0
	Neutral Connection	(20) 750 – 1/0
	Ground Connection	(20) 600-#4 or (40) 250-1/0
lbs (kg)	Weight	1275 (578)

UL 1008 Withstand and Closing Ratings		
Ampere Rating (A)	WCR Ratings (kA)	Voltage (V)
1200	100	480
1600	100	480

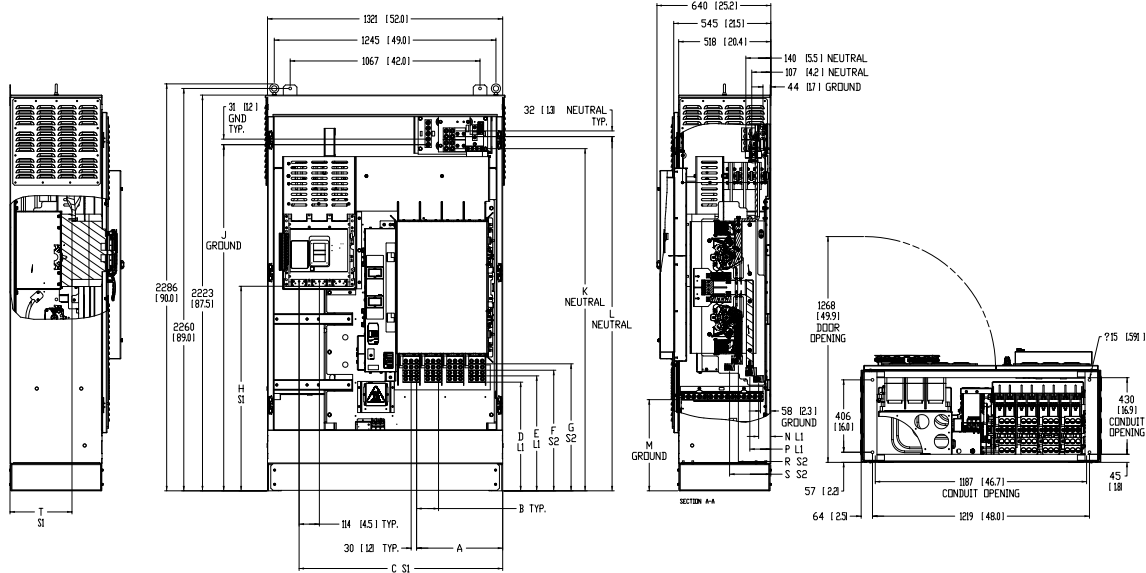
\* All measurements are approximate and for estimation purposes only. Specification characteristics may change without notice. Please contact a Generac Power Systems Industrial Dealer for detailed installation drawings.

# TX301 Series Transfer Switch

1200 — 1600 Amps

Service Entrance Rated · Contactor Type · Open and Delayed Transition

## UNIT DIMENSIONS\*



Service Entrance Rated, Contactor Type, Open and Delayed Transition, 1600A, Type 1 or 3R		
Description		1600A 4 Pole
in (mm)	A (Dim)	19 (483)
	B (Dim)	4.8 (123)
	C (Dim)	45 (1144)
	D (Dim)	24.1 (611)
	E (Dim)	24.5 (646)
	F (Dim)	26.7 (677)
	G (Dim)	28.1 (713)
	H (Dim)	45.2 (1149)
	J (Dim)	76.6 (1944)
	K (Dim)	75.7 (1922)
	L (Dim)	78.3 (1989)
	M (Dim)	20.2 (512)
	N (Dim)	2.7 (68)
	P (Dim)	4.6 (118)
R (Dim)	7.2 (182)	
S (Dim)	9.1 (231)	
T (Dim)	13.7 (348)	
Cu/Al	Normal 75 °C Wire	(4) 500 – 1000
	Standby Source 75 °C Wire	(6) 750 – 4/0
	Load 75 °C Wire	(6) 750 – 4/0
	Neutral Connection	(8) 750 – 1/0
	Ground Connection	(20) 600-#4 or (40) 250-1/0
lbs (kg)	Weight	1385 (628)

UL 1008 Withstand and Closing Ratings		
Ampere Rating (A)	WCR Ratings (kA)	Voltage (V)
1200	100	480
1600	100	480

\* All measurements are approximate and for estimation purposes only. Specification characteristics may change without notice. Please contact a Generac Power Systems Industrial Dealer for detailed installation drawings.